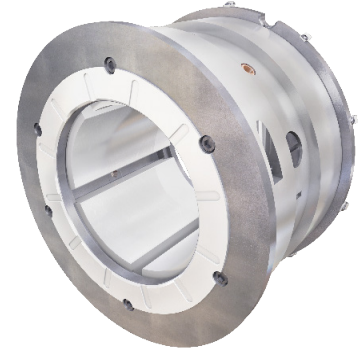
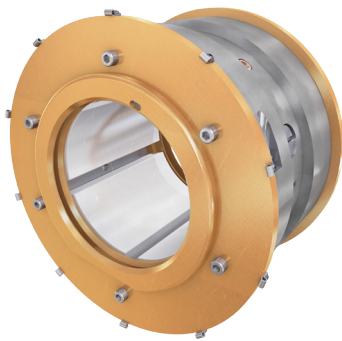


# Journal Pad Unit (JPU) Bearing

## Range of journal pad bearing internals

- Shaft diameter range of 40 - 300mm
- Radial load capacity up to 252kN
- Centre or offset pivoted radial pads can be used
- Length to diameter ratios of 0.4, 0.7 and 1.0 are available
- Can be arranged for flooded or directed lubrication (to minimise power losses)
- Can be supplied with end baffles, floating seals, location faces or tilting pads at the ends of the bearing



## JPU Series running load

Journal shaft diameter (nominal) mm	Journal load			Journal load			Journal load		
	L/D ratio			L/D ratio			L/D ratio		
	0.4			0.7			1		
	Starting load	Running load on pad	Running load between pads	Starting load	Running load on pad	Running load between pads	Starting load	Running load on pad	Running load between pads
	kN	kN	kN	kN	kN	kN	kN	kN	kN
40	1.28	1.41	1.79	2.24	2.46	3.14	3.20	3.52	4.48
50	2.00	2.20	2.80	3.50	3.85	4.90	5.00	5.50	7.00
60	2.88	3.17	4.03	5.04	5.54	7.06	7.20	7.92	10.08
70	3.92	4.31	5.49	6.86	7.55	9.60	9.80	10.78	13.72
80	5.12	5.62	7.17	8.96	9.86	12.54	12.80	14.08	17.92
90	6.48	7.13	9.07	11.34	12.47	15.88	16.20	17.82	22.70
100	8.00	8.80	11.20	14.00	15.40	19.60	20.00	22.00	28.00
110	9.68	10.65	13.55	16.94	18.60	23.70	24.20	26.60	33.90
125	12.50	13.75	17.50	21.88	24.10	30.60	31.25	34.40	43.80
140	15.68	17.25	22.00	27.44	30.20	38.40	39.20	43.10	54.90
160	20.48	22.50	28.70	35.84	39.40	50.20	51.20	56.60	71.70
180	25.92	28.50	36.30	45.36	49.90	68.50	64.80	71.30	90.70
200	32.00	35.20	44.80	56.00	61.60	78.40	80.00	88.00	112.00
225	40.50	44.60	56.70	70.88	78.00	99.20	101.30	111.40	141.80
250	50.00	55.00	70.00	87.50	96.30	122.50	125.00	137.50	175.00
280	62.72	69.00	87.80	109.80	120.70	153.70	156.80	172.50	220.00
300	72.00	79.20	100.78	126.00	138.60	176.40	180.00	198.00	252.00