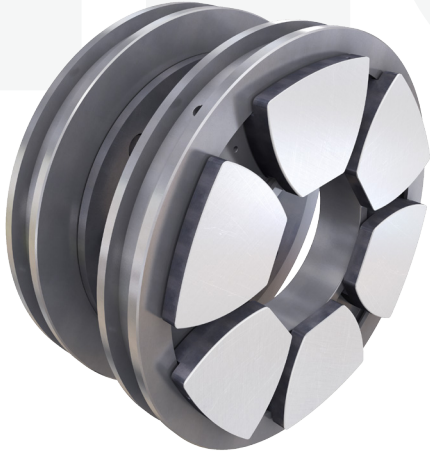


## Omega 6 Series

Range of non-equalised thrust bearing internals offering various thrust pad sizes in different combinations

- 25 individual sizes of thrust pads with 6, 8, 11, 14 or 18 thrust pads per set
- Axial load capacity with offset pivot thrust pads up to 496kN
- Shaft diameter range of 20 - 160mm
- Centre pivoted thrust pads are also available for continuously bi-directional machines if required
- Thrust pads are mounted in retaining rings and can be supplied in halves or one piece designs
- Flooded or directed 'low loss' lubrication alternatives



### Omega 6 Pad Ring

Pad ring ref	Max shaft DIA mm	Thrust surface mm <sup>2</sup>	Max thrust load	
			Offset kN	Centre kN
06017	20	1692	4.9	4.6
06020	24	2424	7.5	7.1
06023	28	3510	11.9	11.1
06026	31	4140	14.9	13.9
06028	34	4920	17.8	16.7
06031	36	5820	21.5	20.0
06034	40	6960	26.4	24.6
06037	44	8436	32.6	30.5
06040	48	10020	39.4	36.9
06044	52	12120	48.8	45.0
06048	57	14280	59.1	53.0
06052	62	16920	71.1	63.0
06057	67	20100	84.4	76.0
06061	74	24000	100.8	92.0
06068	80	28980	121.7	112.0
06074	88	34620	145.4	134.0
06081	95	41220	173.0	160.0
06089	105	48600	204.0	190.0
06097	112	59400	250.0	232.0
06105	127	69600	292.0	270.0
06115	135	83400	350.0	325.0
06125	150	98040	412.0	382.0
06136	160	118200	496.0	460.0