

# 8 Pad Ring



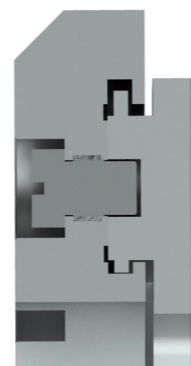
## Thrust Bearings Reference Codes

Example: 08136 NFR/HB1

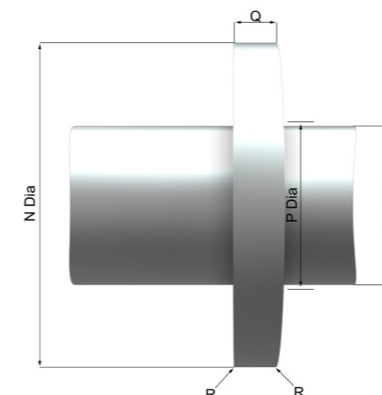
| 1                                  | 2                                     | 3   | 4  | 5                               | 6                      | 7   |   |  |                 |  |
|------------------------------------|---------------------------------------|---|--|---------------------------------|------------------------|---|---|--|-----------------|--|
| Number of Thrust Pads in Full Ring | Thrust Pad Size (approx. width in mm) | Retaining Ring Form   | Lubrication Arrangement                                      | Pad Handing/Pivot Position      | Retaining Ring         | With or Without Adjusting Liners                              |   |  |                 |  |
| 06                                 | 012 052                               | N<br>Normal or standard form (all bearings in this catalogue) | F<br>Flooded lubrication                                     | L<br>Left hand (anti-clockwise) | H<br>Split (in halves) | A<br>Without liners   |   |  |                 |  |
|                                    | 014 057                               |   |  |                                 |                        |   |   |  |                 |  |
|                                    | 017 061                               |   |  |                                 |                        |   |   |  |                 |  |
| 08                                 | 020 068                               |   |  |                                 |                        | E<br>Equalising segments fitted (not shown in this catalogue) | D<br>Directed or "Low Loss" Lubrication | R<br>Right hand (clockwise)  | W<br>Left whole | B<br>With liners or spaces   |
|                                    | 023 074                               |   |  |                                 |                        |   |   |  |                 |  |
| 11                                 | 026 081                               |   |  |                                 |                        |   |   |  |                 | B <sub>1</sub><br>With steel liner left thick for finish machining by customer during installation |
|                                    | 028 089                               |   |  |                                 |                        |   |   |  |                 |  |
| 14                                 | 034 105                               | B <sub>2</sub><br>As "B" including shims for adjusting        |  |                                 |                        |   |   |  |                 |  |
|                                    | 037 115                               |   |  |                                 |                        |   |   |  |                 |  |
|                                    | 040 125                               |   |  |                                 |                        |   |   |  |                 |  |
| 18                                 | 044 136                               |   | B <sub>3</sub><br>With steel liner finished machined to size |                                 |                        |   |   |  |                 |  |
|                                    | 048                                   |   |  |                                 |                        |   |   |  |                 |  |
|                                    |                                       |   |  |                                 |                        |   |   | B <sub>4</sub><br>As "B <sub>3</sub> " including shims for adjusting |                 |  |

## Key features

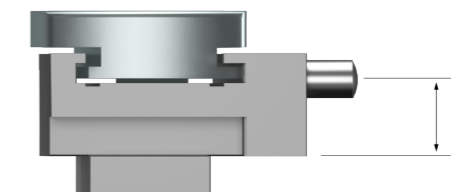
- Axial adjustment using a combination of shims and liners, finished to required thickness
- Specialist pad handing of either offset or centre pivots to suit direction of rotation
- Instrumentation to provide remote monitoring of bearing performance
- Flooded or directed 'low loss' lubrication alternatives
- 8 pad and 11 pad quantity sets can be equalised to accommodate shaft misalignment



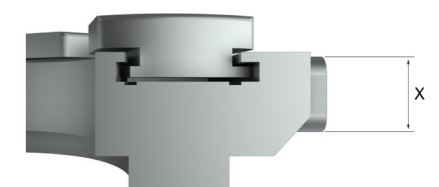
Thrust pad stop



Detail of combined collar and shaft

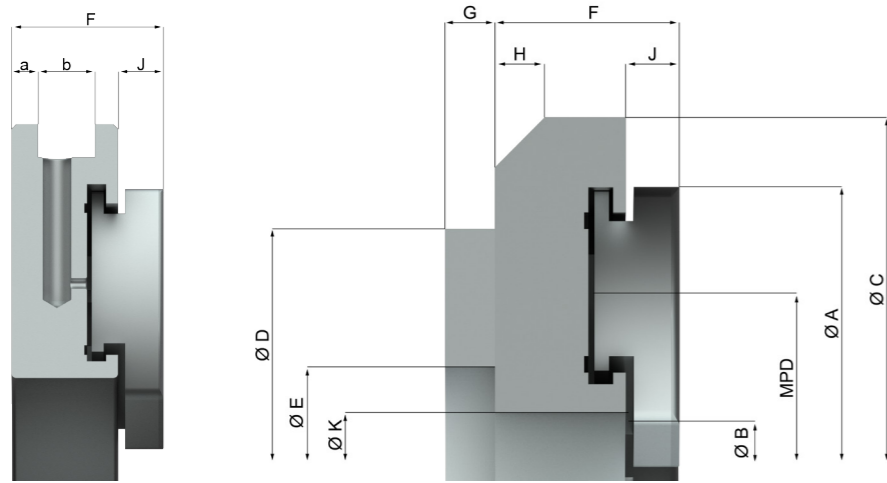


Stop pin in small thrust rings



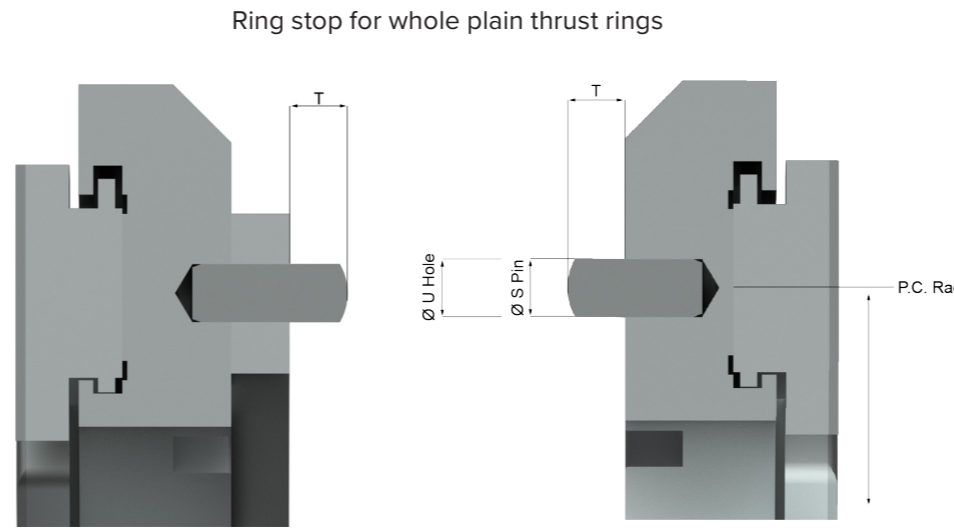
Stop key in large thrust rings

# Technical information



Thrust ring for "low-loss" application

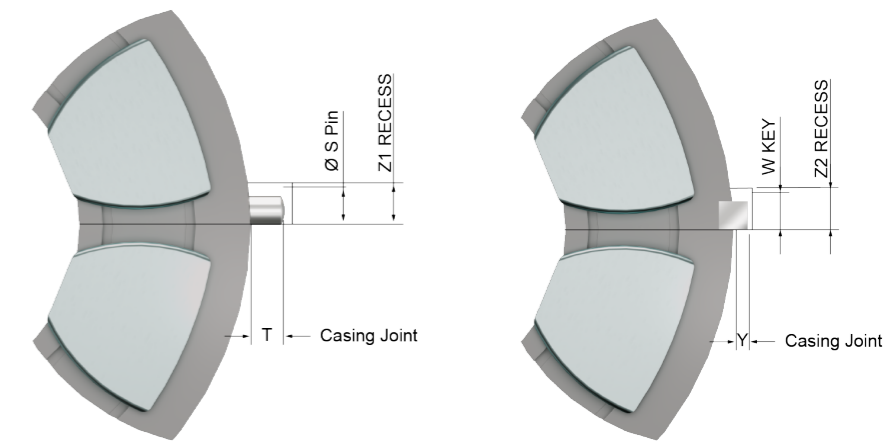
Plain thrust ring with liner



With liner

Without liner

Ring stop for split and plain rings



Pin

Key

| Pad ring ref | Max shaft DIA mm | Thrust surface mm <sup>2</sup> | Max thrust load |           | MPD (approx) | Total axial clearance | A    | B     | C      | D   | E   | F     | G    | H  | I    | K    | N   | P    | Q  | R   | Ring stop for 'whole' and 'plain' thrust rings or 'low loss' thrust rings |     |      |          | Ring stop for 'split' and 'plain' thrust rings |      |     |      |     |      |      |     |    |    |      |     |      |
|--------------|------------------|--------------------------------|-----------------|-----------|--------------|-----------------------|------|-------|--------|-----|-----|-------|------|----|------|------|-----|------|----|-----|---|-----|------|----------|--|------|-----|------|-----|------|------|-----|----|----|------|-----|------|
|              |                  |                                | Offset kN       | Centre kN |              |                       |      |       |        |     |     |       |      |    |      |      |     |      |    |     | S   | T   | U    | P.C. rad | Pin or key                                     | S    | T   | Z1   | V   | w    | X    | Y   | Z2 | a  | b    |     |      |
| 08012        | 25               | 1,120                          | 2.78            | 2.43      | 41.9         | 0.20                  | 52.5 | 27.6  | 63.50  | 51  | 32  | 12.70 | 3.2  | 3  | 2.5  | 28   | 54  | 26.5 | 7  | 0.4 | 3.2   | 3.5 | 4    | 20.6     | PIN  | 3.2  | 3.5 | 3.8  | 6   |      |      |     |    |    |      | 3.0 | 5.0  |
| 08014        | 29               | 1,568                          | 4.16            | 3.78      | 49.7         | 0.20                  | 62   | 33    | 73.03  | 60  | 38  | 14.29 | 3.2  | 4  | 2.5  | 34   | 64  | 32   | 9  | 0.4 | 4.0   | 4   | 5    | 24.6     | PIN  | 4.0  | 4   | 4.8  | 7   |      |      |     |    |    |      | 3.0 | 6.5  |
| 08017        | 35               | 2,256                          | 6.5             | 6.1       | 59.5         | 0.20                  | 74.5 | 39    | 85.73  | 70  | 48  | 15.88 | 3.2  | 4  | 4    | 40.5 | 76  | 38   | 10 | 0.4 | 4.8   | 5   | 5.8  | 29.4     | PIN  | 4.8  | 5   | 5.3  | 8   |      |      |     |    |    |      | 3.0 | 6.5  |
| 08020        | 41               | 3,232                          | 10.0            | 9.4       | 69.4         | 0.25                  | 87.5 | 45.8  | 101.60 | 81  | 56  | 17.46 | 3.2  | 5  | 4    | 48   | 90  | 43   | 13 | 0.8 | 4.8   | 5   | 5.8  | 34.1     | PIN  | 4.8  | 5   | 5.3  | 9   |      |      |     |    |    |      | 4.0 | 7.0  |
| 08023        | 49               | 4,680                          | 15.8            | 14.7      | 84.6         | 0.25                  | 105  | 57.2  | 120.56 | 95  | 70  | 19.05 | 3.2  | 5  | 5.5  | 59   | 108 | 54   | 16 | 0.8 | 5.6   | 6   | 6.5  | 41.3     | PIN  | 4.8  | 6   | 6.4  | 9.5 |      |      |     |    |    |      | 4.0 | 8.5  |
| 08026        | 54               | 5,520                          | 19.8            | 18.5      | 91.1         | 0.30                  | 114  | 60    | 130.18 | 105 | 73  | 20.64 | 4.8  | 6  | 5.5  | 63   | 117 | 58   | 17 | 0.8 | 6.4   | 7   | 7.5  | 44.5     | PIN  | 6.4  | 7   | 7.2  | 10  |      |      |     |    |    |      | 4.0 | 9.5  |
| 08028        | 58               | 6,560                          | 23.8            | 22.3      | 99.3         | 0.30                  | 124  | 66    | 139.70 | 113 | 81  | 22.23 | 4.8  | 6  | 6.5  | 69   | 127 | 64   | 19 | 0.8 | 6.4   | 7   | 7.5  | 48.4     | PIN  | 6.4  | 7   | 7.2  | 10  |      |      |     |    |    |      | 4.0 | 10.0 |
| 08031        | 64               | 7,760                          | 28.6            | 26.7      | 110.1        | 0.30                  | 137  | 74    | 152.40 | 125 | 87  | 23.81 | 4.8  | 6  | 6.5  | 78   | 140 | 70   | 21 | 0.8 | 6.4   | 7   | 7.5  | 53.2     | PIN  | 6.4  | 7   | 7.2  | 11  |      |      |     |    |    |      | 4.5 | 10.5 |
| 08034        | 70               | 9,280                          | 35.2            | 32.9      | 119.6        | 0.35                  | 149  | 79.9  | 168.28 | 135 | 97  | 25.40 | 4.8  | 6  | 7.5  | 85   | 152 | 76   | 22 | 0.8 | 7.9   | 8   | 9    | 57.9     | PIN  | 7.9  | 8   | 9    | 13  |      |      |     |    |    |      | 4.5 | 11.0 |
| 08037        | 76               | 11,248                         | 43.4            | 40.7      | 129.9        | 0.35                  | 162  | 86.6  | 180.96 | 149 | 105 | 26.99 | 4.8  | 6  | 7.5  | 92   | 165 | 84   | 25 | 0.8 | 7.9   | 8   | 9    | 63.5     | PIN  | 7.9  | 8   | 9    | 13  |      |      |     |    |    |      | 5.5 | 11.0 |
| 08040        | 82               | 13,360                         | 52.5            | 49.3      | 140.9        | 0.35                  | 176  | 93.4  | 196.85 | 162 | 117 | 28.58 | 4.8  | 6  | 9.5  | 100  | 179 | 92   | 27 | 0.8 | 7.9   | 8   | 9    | 69.9     | PIN  | 7.9  | 8   | 9    | 13  |      |      |     |    |    |      | 5.5 | 11.0 |
| 08044        | 90               | 16,160                         | 65.1            | 60.0      | 153.5        | 0.40                  | 192  | 101.3 | 215.90 | 178 | 127 | 31.75 | 4.8  | 7  | 9.5  | 109  | 195 | 100  | 30 | 0.8 | 9.5   | 8   | 10.5 | 76.2     | PIN  | 9.5  | 8   | 10.3 | 14  |      |      |     |    |    |      | 5.5 | 12.0 |
| 08048        | 98               | 19,040                         | 78.8            | 70.8      | 168.1        | 0.40                  | 210  | 111.3 | 234.95 | 191 | 140 | 34.92 | 6.4  | 8  | 9.5  | 119  | 213 | 110  | 32 | 0.8 | 9.5   | 8   | 10.5 | 82.6     | PIN  | 9.5  | 8   | 10.3 | 17  |      |      |     |    |    |      | 5.5 | 15.0 |
| 08052        | 107              | 22,560                         | 94.8            | 84.0      | 183.5        | 0.40                  | 229  | 122.1 | 254.00 | 206 | 149 | 38.10 | 6.4  | 10 | 11.5 | 130  | 232 | 119  | 35 | 0.8 | 11.1  | 8   | 12.5 | 88.9     | PIN  | 11.1 | 8   | 12   | 17  |      |      |     |    |    |      | 6   | 15.0 |
| 08057        | 118              | 26,800                         | 112.6           | 102.0     | 201.5        | 0.50                  | 251  | 134.9 | 279.40 | 229 | 165 | 41.28 | 6.4  | 10 | 11.5 | 144  | 254 | 132  | 38 | 0.8 | 12.7  | 10  | 14   | 98.4     | PIN  | 12.7 | 10  | 13.5 | 19  |      |      |     |    |    |      | 6   | 17.5 |
| 08061        | 128              | 32,000                         | 134.4           | 122.5     | 219.5        | 0.50                  | 273  | 147.6 | 301.63 | 244 | 181 | 44.45 | 6.4  | 11 | 13.5 | 157  | 276 | 141  | 43 | 0.8 | 12.7  | 10  | 14   | 106.4    | KEY  |      |     |      |     | 15.9 | 25.4 | 5.6 | 17 | 7  | 17.5 |     |      |
| 08068        | 138              | 38,640                         | 162.3           | 149.0     | 238.0        | 0.50                  | 297  | 158.3 | 323.85 | 270 | 194 | 47.63 | 6.4  | 11 | 13.5 | 169  | 300 | 156  | 48 | 0.8 | 15.9  | 13  | 17.5 | 115.9    | KEY  |      |     |      |     | 15.9 | 28.6 | 5.6 | 17 | 7  | 20.0 |     |      |
| 08074        | 152              | 46,160                         | 193.9           | 179.0     | 259.4        | 0.50                  | 324  | 172.1 | 355.60 | 292 | 216 | 50.80 | 9.5  | 11 | 13.5 | 182  | 327 | 170  | 51 | 0.8 | 15.9  | 13  | 17.5 | 127.0    | KEY  |      |     |      |     | 15.9 | 28.6 | 5.6 | 17 | 8  | 21.0 |     |      |
| 08061        | 166              | 54,960                         | 231.0           | 213.0     | 283.7        | 0.60                  | 354  | 188.9 | 384.18 | 321 | 232 | 57.15 | 9.5  | 13 | 15   | 202  | 357 | 187  | 56 | 0.8 | 19.1  | 13  | 21   | 138.1    | KEY  |      |     |      |     | 15.9 | 31.8 | 5.6 | 17 | 9  | 24.0 |     |      |
| 08089        | 180              | 64,800                         | 272.0           | 253.0     | 307.0        | 0.60                  | 384  | 202.6 | 415.93 | 346 | 257 | 60.33 | 9.5  | 13 | 15   | 216  | 391 | 200  | 60 | 1.5 | 19.1  | 13  | 21   | 150.8    | KEY  |      |     |      |     | 19.1 | 31.8 | 6.4 | 20 | 9  | 27.0 |     |      |
| 08097        | 196              | 79,200                         | 333.0           | 309.0     | 335.0        | 0.60                  | 419  | 221.2 | 454.03 | 378 | 276 | 66.68 | 9.5  | 14 | 17   | 236  | 425 | 219  | 67 | 1.5 | 22.2  | 16  | 24   | 163.5    | KEY  |      |     |      |     | 19.1 | 38.1 | 6.4 | 20 | 9  | 31.0 |     |      |
| 08105        | 215              | 92,800                         | 390.0           | 362.0     | 365.6        | 0.60                  | 457  | 241.9 | 495.30 | 416 | 302 | 73.03 | 9.5  | 16 | 18   | 258  | 464 | 240  | 73 | 1.5 | 22.2  | 16  | 24   | 179.4    | KEY  |      |     |      |     | 19.1 | 38.1 | 6.4 | 20 | 10 | 35.0 |     |      |
| 08115        | 235              | 111,200                        | 467.0           | 434.0     | 402.3        | 0.70                  | 502  | 267.6 | 539.75 | 448 | 333 | 79.38 | 12.7 | 17 | 19   | 285  | 508 | 264  | 79 | 1.5 | 25.4  | 16  | 27   | 195.3    | KEY  |      |     |      |     | 22.2 | 44.5 | 8   | 23 | 10 | 40.0 |     |      |
| 08125        | 252              | 130,720                        | 549.0           | 510.0     | 437.2        | 0.70                  | 546  | 290.1 | 584.20 | 489 | 362 | 85.73 | 12.7 | 17 | 22   | 308  | 552 | 287  | 86 | 1.5 | 25.4  | 16  | 27   | 212.7    | KEY  |      |     |      |     | 22.2 | 44.5 | 8   | 23 | 10 | 43.0 |     |      |
| 08136        | 280              | 157,600                        | 662.0           | 615.0     | 478.5        | 0.70                  | 597  | 318.6 | 641.35 | 533 | 394 | 92.08 | 12.7 | 19 | 27   | 338  | 603 | 314  | 95 | 1.5 | 28.6  | 19  | 31   | 231.8    | KEY  |      |     |      |     | 22.2 | 50.8 | 8   | 23 | 10 | 45.0 |     |      |

|                    |                  |                  |                  |                  |
|--------------------|------------------|------------------|------------------|------------------|
| OVER               | 13               | 22               | 41               | 65               |
| "F" UP TO AND INC. | 22               | 41               | 65               | 92               |
| TOLERANCE          | +0.010<br>-0.030 | +0.013<br>-0.043 | +0.015<br>-0.056 | +0.020<br>-0.071 |

Dimensions are in millimetres. Please contact us for additional details if required.  
Michell Bearings reserve the right to change the design without notice.